

Nebel Sø Put And Take

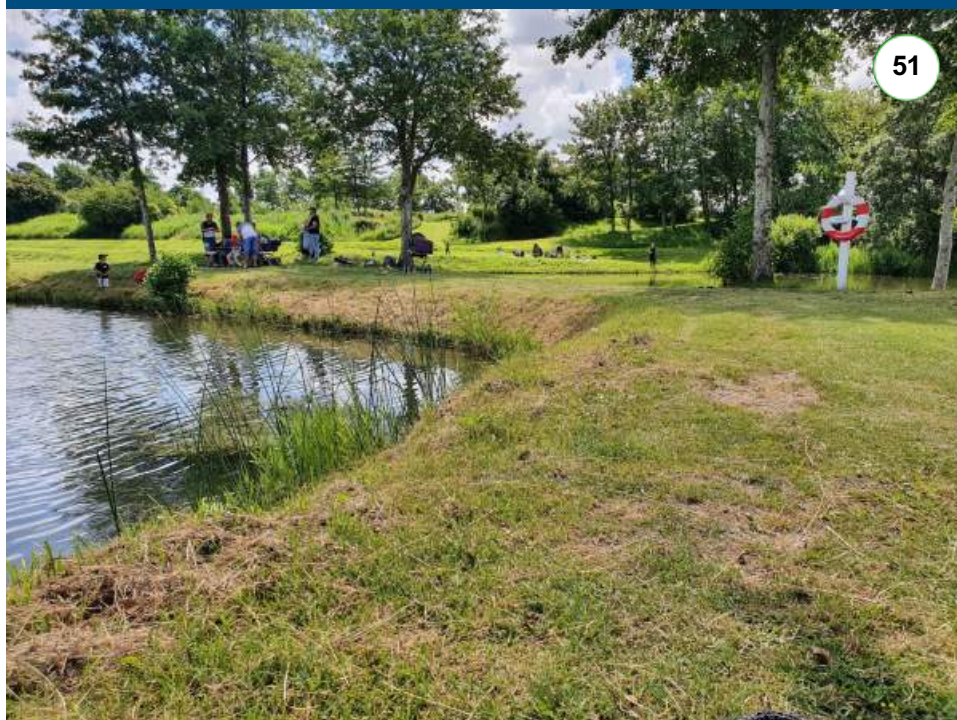
Vetervadvej 17, Vester Nebel 6715 Esbjerg N /

+45 51 22 90 76 / +45 51 22 90 76

<https://dgm.nu/nebel-soe/>

gitte@dgm.nu

Børns sø Pris / Koncept



Åbningstider

From 5 AM until 11 PM



A warm welcome at Nebel Sø Put and Take to both old and new customers.

Nebel Lake has been a put and take lake since 1968. The lakes are old marl pits and a transition also tried as eel fish farms.

Nebel Lake is located in a beautiful and partly untouched nature, but very well maintained nature. Nebel Lake consists of 2 lakes, the largest of which has a natural stream flow.

The small lake, from Easter until and including the autumn holidays (week 42) is a children and family lake, where the fish that are released are from about 700 grams to 2 kilos.

In large lakes, the fish will be from 1.5 kilos and up.

We release fish regularly, but not on specific days. The releases are of different sizes and species - rainbow trout and brown trout.

In the lakes there are also perch, bream, pike, carp, carp, knots, pikeperch, tench and eel. For fishing of these species, a separate fishing license is required. In connection with the specimen's fishing, the lake's special rules for this must be observed. Available upon request.

You have to pay for the fishing before you start your fishing, this is done either in the kiosk or by self-service in the container located at the flagpole.

Nebel Lake, safety is high, which is why we have lifebuoys around both lakes.

Nebel Lake is 6 km from the Esbjerg motorway. From Esbjerg center it is about 12 km and from Varde about 10 km.

From the large parking lot, the kiosk and the payment area, there is a short walking distance to the lakes.

We are handicap accessibility approved, which means that it is possible to get down to the large lake on a stable will, just as we can unlock so a car will be able to drive closer.

We also have a handicap toilet, as well as a ramp up to the shop.

The kiosk is open from mid-February to early November.

From the kiosk we sell drinks, sweets, ice cream and some light food as well as some fishing tackle intended for put and take fishing.

The cleaning area is located behind the kiosk, is covered and there is running cold fresh water. From the cleaning site there is a beautiful view of the 2 lakes and the entire green area.

Accommodation is also an option. We have 5 cabins, 1 caravan and 4 shelters. Own caravan and mobile home is also possible.

The terrace by the kiosk is for free use - the conservatory can be booked by group and is used primarily by the people who have rented cabins. In the conservatory there is a freezer used by overnight guests to store catches in.

Events and offers will appear on our facebook page - so keep an eye out.

Nebel Lake became the first lake in Denmark to be friendly, ie we go up in biodiversity, and therefore we do not use poison to keep our area nice.

Nebel Lake is leased and operated by Det Gamle Mejeri in Vester Nebel. Det Gamle Mejeri private self-governing institutions, for young people with psychosocial difficulties. For many, the young people live in the dairy, others come driving to on a daily basis.